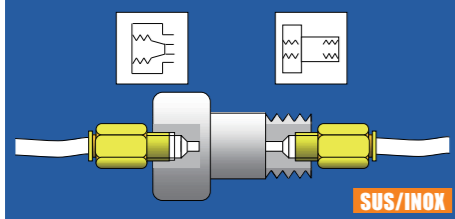


# CAM FOLLOWERS STAINLESS STEEL

TAP HOLE FOR PIPING  
SCREWDRIVER SLOT HEAD



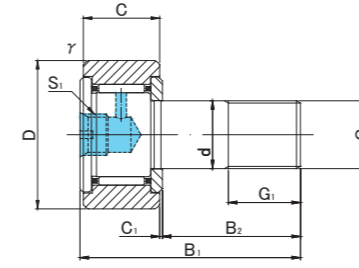
STAINLESS STEEL



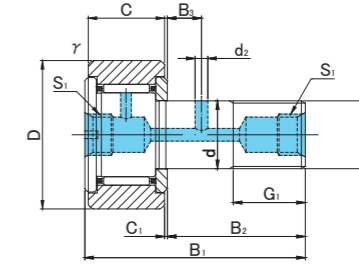
CFT..M



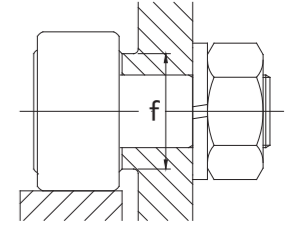
CFT..VM



CFT6(V)M~CFT10-1(V)M



CFT12(V)M~CFT18(V)M



## CFT..M TYPE

Prepacked Grease

Stud diameter (mm)	h7 tolerance	Designation				Dimensions (mm)													Basic dynamic load rating	Basic static load rating	Largest permissible load	Limiting speed *	Track load capacity		Max tightening torque	Mass
		Cylindrical outer ring		Crowned outer ring R500(CF6 ~ CF18)		D	C	d	G	G1	B1	B2	B3	C1	S1	d2	r <sub>s</sub> min	f min					Cr N	Cor N		
6	0 -0.012	CFT 6M	CFT 6MUU	CFT 6MR	CFT 6MUUR	16	11	6	M6×1	8	28	16	—	0.6	M6×0.75	—	0.3	11	3 330	3 330	2 110	25 000	3 430	1 080	3	18.5
		CFT 6VM	CFT 6VMUU	CFT 6VMR	CFT 6VMUUR														6 400	7 840	2 110	12 000				
8	0 -0.015	CFT 8M	CFT 8MUU	CFT 8MR	CFT 8MUUR	19	11	8	M8×1.25	10	32	20	—	0.6	M6×0.75	—	0.3	13	3 960	4 330	4 710	20 000	4 020	1 370	8	28.5
		CFT 8VM	CFT 8VMUU	CFT 8VMR	CFT 8VMUUR														7 470	10 270	4 710	9 000				
10	0 -0.015	CFT10M	CFT10MUU	CFT10MR	CFT10MUUR	22	12	10	M10×1.25	12	36	23	—	0.6	M6×0.75	—	0.3	15	4 950	6 310	6 860	17 000	4 700	1 670	15	45
		CFT10VM	CFT10VMUU	CFT10VMR	CFT10VMUUR														8 740	13 340	7 450	7 500				
10	0 -0.015	CFT10-1M	CFT10-1MUU	CFT10-1MR	CFT10-1MUUR	26	12	10	M10×1.25	12	36	23	—	0.6	M6×0.75	—	0.3	15	4 950	6 310	6 860	17 000	5 490	2 060	15	60
		CFT10-1VM	CFT10-1VMUU	CFT10-1VMR	CFT10-1VMUUR														8 740	13 340	7 450	7 500				
12	0 -0.018	CFT12M	CFT12MUU	CFT12MR	CFT12MUUR	30	14	12	M12×1.5	13	40	25	6	0.6	M6×0.75	3	0.6	20	7 300	9 010	7 840	14 000	7 060	2 450	22	95
		CFT12VM	CFT12VMUU	CFT12VMR	CFT12VMUUR														12 350	18 120	9 010	6 000				
12	0 -0.018	CFT12-1M	CFT12-1MUU	CFT12-1MR	CFT12-1MUUR	32	14	12	M12×1.5	13	40	25	6	0.6	M6×0.75	3	0.6	20	7 300	9 010	7 840	14 000	7 450	2 740	22	105
		CFT12-1VM	CFT12-1VMUU	CFT12-1VMR	CFT12-1VMUUR														12 350	18 120	9 010	6 000				
16	0 -0.018	CFT16M	CFT16MUU	CFT16MR	CFT16MUUR	35	18	16	M16×1.5	17	52	32.5	8	0.8	Rc1/8	3	0.6	24	11 080	16 860	14 660	10 000	11 200	3 140	58	170
		CFT16VM	CFT16VMUU	CFT16VMR	CFT16VMUUR														19 020	34 610	15 840	4 500				
18	0 -0.018	CFT18M	CFT18MUU	CFT18MR	CFT18MUUR	40	20	18	M18×1.5	19	58	36.5	8	0.8	Rc1/8	3	1	26	13 520	23 180	20 160	8 500	14 400	3 720	87	250
		CFT18VM	CFT18VMUU	CFT18VMR	CFT18VMUUR														23 250	47 240	21 240	3 500				

\* Without seals, suitable for grease lubrication. In case of oil lubrication, up to 130% of this value shall be permissible, and 70% of this value shall apply for types with seals.

### OUTER RINGS TOLERANCE (μm)

TYPE	Cylindrical outer ring	Crowned outer ring
CF6M	0/-8	0/-50
CF8M,CF10M,CF10-1M,CF12M	0/-9	0/-50
CF12-1M,CF16M,CF18M,CF20-1M	0/-11	0/-50
CF20M,CF24M,CF24-1M,CF30M	0/-13	0/-50
CF30-1M,CF30-2M	0/-15	0/-50

### ACCESSORIES

TYPE	Image
All types	STAINLESS NUT Attached

**CAM FOLLOWERS**  
**STAINLESS STEEL**  
 TAP HOLE FOR PIPING  
 SCREWDRIVER SLOT HEAD

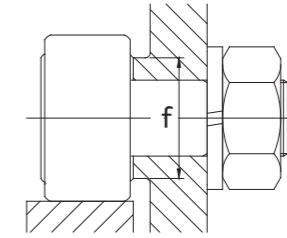
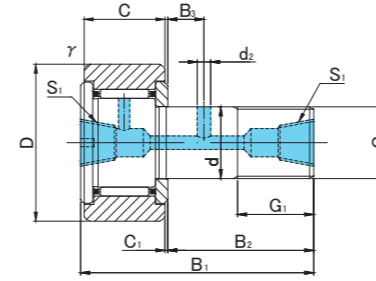
SUS/INOX



CFT..M



CFT..VM



**CFT..M TYPE**

Prepacked Grease

Stud diameter (mm)	h7 tolerance	Designation				Dimensions (mm)													Basic dynamic load rating	Basic static load rating	Largest permissible load	Limiting speed *	Track load capacity		Max tightening torque	Mass
		Cylindrical outer ring		Crowned outer ring R1000(CF20 ≤)		D	C	d	G	G1	B1	B2	B3	C1	S1	d2	rs min	f min					Cr N	Cor N		
20	0 -0.021	CFT20M	CFT20MUU	CFT20MR	CFT20MUUR	52	24	20	M20×1.5	21	66	40.5	9	0.8	Rc1/8	4	1	36	19 020	31 830	25 710	7 000	23 200	8 230	120	460
		CFT20VM	CFT20VMUU	CFT20VMR	CFT20VMUUR														30 470	59 320	25 710	3 500				
20	0 -0.021	CFT20-1M	CFT20-1MUU	CFT20-1MR	CFT20-1MUUR	47	24	20	M20×1.5	21	66	40.5	9	0.8	Rc1/8	4	1	36	19 020	31 830	25 710	7 000	21 000	7 150	120	385
		CFT20-1VM	CFT20-1VMUU	CFT20-1VMR	CFT20-1VMUUR														30 470	59 320	25 710	3 500				
24	0 -0.021	CFT24M	CFT24MUU	CFT24MR	CFT24MUUR	62	29	24	M24×1.5	25	80	49.5	11	0.8	Rc1/8	4	1	40	28 040	48 410	39 600	6 500	34 200	10 500	220	815
		CFT24VM	CFT24VMUU	CFT24VMR	CFT24VMUUR														42 820	84 650	39 600	3 000				
24	0 -0.021	CFT24-1M	CFT24-1MUU	CFT24-1MR	CFT24-1MUUR	72	29	24	M24×1.5	25	80	49.5	11	0.8	Rc1/8	4	1	40	28 040	48 410	39 600	6 500	39 800	12 900	220	1 140
		CFT24-1VM	CFT24-1VMUU	CFT24-1VMR	CFT24-1VMUUR														42 820	84 650	39 600	3 000				
30	0 -0.021	CFT30M	CFT30MUU	CFT30MR	CFT30MUUR	80	35	30	M30×1.5	32	100	63	15	1	Rc1/8	4	1	46	41 740	78 250	58 960	5 000	52 600	14 900	450	1 870
		CFT30VM	CFT30VMUU	CFT30VMR	CFT30VMUUR														62 210	132 530	58 960	2 200				
30	0 -0.021	CFT30-1M	CFT30-1MUU	CFT30-1MR	CFT30-1MUUR	85	35	30	M30×1.5	32	100	63	15	1	Rc1/8	4	1	46	41 740	78 250	58 960	5 000	56 000	16 100	450	2 030
		CFT30-1VM	CFT30-1VMUU	CFT30-1VMR	CFT30-1VMUUR														62 210	132 530	58 960	2 200				
30	0 -0.021	CFT30-2M	CFT30-2MUU	CFT30-2MR	CFT30-2MUUR	90	35	30	M30×1.5	32	100	63	15	1	Rc1/8	4	1	46	41 740	78 250	58 960	5 000	59 300	17 300	450	2 220
		CFT30-2VM	CFT30-2VMUU	CFT30-2VMR	CFT30-2VMUUR														62 210	132 530	58 960	2 200				

\* Without seals, suitable for grease lubrication. In case of oil lubrication, up to 130% of this value shall be permissible, and 70% of this value shall apply for types with seals.

OUTER RINGS TOLERANCE (μm)

TYPE	Cylindrical outer ring	Crowned outer ring
CF6M	0/-8	0/-50
CF8M,CF10M,CF10-1M,CF12M	0/-9	0/-50
CF12-1M,CF16M,CF18M,CF20-1M	0/-11	0/-50
CF20M,CF24M,CF24-1M,CF30M	0/-13	0/-50
CF30-1M,CF30-2M	0/-15	0/-50

ACCESSORIES

TYPE	STAINLESS NUT
All types	Attached