

旋削形
ニードルローラベアリング
ステンレススチール
内輪付き

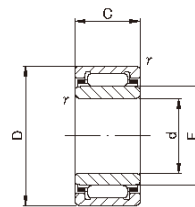


ステンレススチール

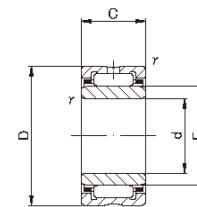


NA49..M ,NKI..M

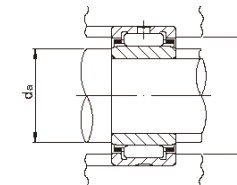
ステンレススチール



NKI.M (d ≤ 8)



NA49..M, NKI..M



NA49..M ,NKI..M TYPE

| 軸径 (mm) | 呼び番号 | | 主要寸法 (mm) | | | | | 取付関係寸法 (mm) | | | 基本動定格 荷重 | 基本静定格 荷重 | 許容回転数* | 質量 | 組合せ軸受 | |
|------------|---------|------------|-----------------------------------|----|----|---------|----|-------------|------|------|-------------|-------------|--------|-----------|----------|-----------|
| | NA49..M | NKI..M | d | D | C | f's min | F | da | | Da最大 | Cr N | Cor N | rpm | g (参考) | 外輪 | 内輪 |
| | | | | | | | | 最小 | 最大 | | | | | | | |
| 5 | NA495M | — | 5 | 13 | 10 | 0.15 | 7 | 6.2 | 6.7 | 11.8 | 2 700 | 2 400 | 34 000 | 7.3 | RNA495M | IR5710M |
| | — | NKI 5/12M | 5 ⁰ _{-0.008} | 15 | 12 | 0.3 | 8 | 7 | 7.7 | 13 | 4 600 | 4 300 | 32 000 | 11.9 | NK8/12M | IR5812M |
| | — | NKI 5/16M | 5 | 15 | 16 | 0.3 | 8 | 7 | 7.7 | 13 | 6 500 | 6 700 | 32 000 | 16.7 | NK8/16M | IR5816M |
| 6 | NA496M | — | 6 | 15 | 10 | 0.15 | 8 | 7.2 | 7.7 | 13.8 | 3 500 | 3 100 | 32 000 | 9.1 | RNA496M | IR6810M |
| | — | NKI 6/12M | 6 ⁰ _{-0.008} | 16 | 12 | 0.3 | 9 | 8 | 8.7 | 14 | 5 000 | 4 800 | 30 000 | 13 | NK9/12M | IR6912M |
| | — | NKI 6/16M | 6 | 16 | 16 | 0.3 | 9 | 8 | 8.7 | 14 | 6 900 | 7 500 | 30 000 | 17.5 | NK9/16M | IR6916M |
| 7 | NA497M | — | 7 | 17 | 10 | 0.15 | 9 | 8.2 | 8.7 | 15.8 | 4 100 | 3 300 | 30 000 | 11.2 | RNA497M | IR7910M |
| | — | NKI 7/12M | 7 ⁰ _{-0.008} | 17 | 12 | 0.3 | 10 | 9 | 9.7 | 15 | 5 400 | 5 500 | 28 000 | 14.3 | NK10/12M | IR71012M |
| | — | NKI 7/16M | 7 | 17 | 16 | 0.3 | 10 | 9 | 9.7 | 15 | 7 500 | 8 400 | 28 000 | 19.2 | NK10/16M | IR71016M |
| 8 | NA498M | — | 8 ⁰ _{-0.008} | 19 | 11 | 0.2 | 10 | 9.2 | 9.7 | 17.4 | 5 700 | 4 600 | 28 000 | 15 | RNA498M | IR81011M |
| 9 | — | NKI 9/12M | 9 | 19 | 12 | 0.3 | 12 | 11 | 11.5 | 17 | 6 000 | 6 700 | 26 000 | 16.7 | NK12/12M | IR91212M |
| | — | NKI 9/16M | 9 ⁰ _{-0.008} | 19 | 16 | 0.3 | 12 | 11 | 11.5 | 17 | 8 400 | 10 300 | 26 000 | 22.5 | NK12/16M | IR91216M |
| | NA499M | — | 9 | 20 | 11 | 0.3 | 12 | 11 | 11.5 | 18 | 6 000 | 5 700 | 26 000 | 16.7 | RNA499M | IR91211M |
| 10 | NA4900M | — | 10 | 22 | 13 | 0.3 | 14 | 12 | 13 | 20 | 8 400 | 9 200 | 24 000 | 24 | RNA4900M | IR101413M |
| | — | NKI 10/16M | 10 ⁰ _{-0.008} | 22 | 16 | 0.3 | 14 | 12 | 13 | 20 | 10 800 | 12 600 | 24 000 | 30 | NK14/16M | IR101416M |
| | — | NKI 10/20M | 10 | 22 | 20 | 0.3 | 14 | 12 | 13 | 20 | 13 600 | 17 000 | 24 000 | 38 | NK14/20M | IR101420M |
| 12 | NA4901M | — | 12 | 24 | 13 | 0.3 | 16 | 14 | 15 | 22 | 8 900 | 10 200 | 23 000 | 26.5 | RNA4901M | IR121613M |
| | — | NKI 12/16M | 12 ⁰ _{-0.008} | 24 | 16 | 0.3 | 16 | 14 | 15 | 22 | 11 300 | 13 800 | 23 000 | 33.5 | NK16/16M | IR121616M |
| | — | NKI 12/20M | 12 | 24 | 20 | 0.3 | 16 | 14 | 15 | 22 | 14 300 | 18 700 | 23 000 | 42.5 | NK16/20M | IR121620M |
| 15 | — | NKI 15/16M | 15 | 27 | 16 | 0.3 | 19 | 17 | 18 | 25 | 12 800 | 17 200 | 21 000 | 39.5 | NK19/16M | IR151916M |
| | — | NKI 15/20M | 15 ⁰ _{-0.008} | 27 | 20 | 0.3 | 19 | 17 | 18 | 25 | 16 200 | 23 200 | 21 000 | 50 | NK19/20M | IR151920M |
| | NA4902M | — | 15 | 28 | 13 | 0.3 | 20 | 17 | 19 | 26 | 10 000 | 12 600 | 20 000 | 35 | RNA4902M | IR152013M |
| 17 | NA4903M | — | 17 ⁰ _{-0.008} | 30 | 13 | 0.3 | 22 | 19 | 21 | 28 | 10 800 | 14 300 | 18 000 | 39 | RNA4903M | IR172213M |
| 20 | NA4904M | — | 20 ⁰ _{-0.010} | 37 | 17 | 0.3 | 25 | 22 | 24 | 35 | 19 300 | 23 000 | 16 000 | 78.5 | RNA4904M | IR202517M |
| 25 | NA4905M | — | 25 ⁰ _{-0.010} | 42 | 17 | 0.3 | 30 | 27 | 29 | 40 | 21 800 | 28 200 | 13 000 | 92.5 | RNA4905M | IR253017M |

*許容回転数は油潤滑に適用。グリース潤滑では上記の60%の値になります。

NA..M ,NKI..M



NA..M ,NKI..M



ニードルローラベアリング
ステンレススチール