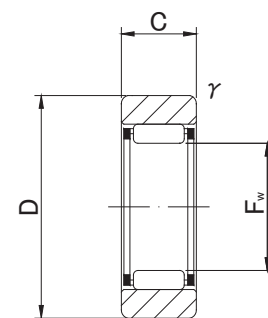
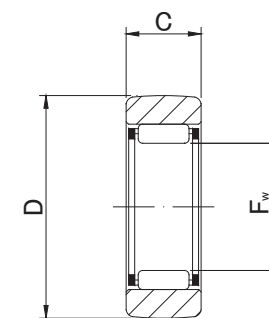




RNAS...M



RNAS...M



RNAS...MR

RNAS...M 类型

预包装润滑脂

| 轴直径<br>(mm) | 类型代号     |                    | 尺寸 (mm)                                  |    |      |          | 基本额定动负荷<br> | 基本额定静负荷<br> | 轨道载荷能力<br> |               | 允许转速<br>* | 质量   |           |           |
|-------------|----------|--------------------|--|----|------|----------|-------------|-------------|------------|---------------|-----------|------|-----------|-----------|
|             | 圆筒外圈<br> | 球面外圈<br>(R500)<br> |  |    |      | $r_s$ 最小 |             |             | $C_r$<br>N | $C_{or}$<br>N |           |      | 圆筒外圈<br>N | 球面外圈<br>N |
|             |          |                    |  |    |      |          |             |             |            |               |           |      |           |           |
| 7           | RNAS 5M  | RNAS 5MR           | 7 <sup>+0.022</sup> / <sub>+0.013</sub>  | 16 | 7.8  | 0.3      | 2 520       | 2 190       | 2 350      | 1 080         | 30 000    | 8.9  |           |           |
| 10          | RNAS 6M  | RNAS 6MR           | 10 <sup>+0.027</sup> / <sub>+0.016</sub> | 19 | 9.8  | 0.3      | 3 790       | 4 180       | 3 530      | 1 370         | 20 000    | 13.9 |           |           |
| 12          | RNAS 8M  | RNAS 8MR           | 12 <sup>+0.027</sup> / <sub>+0.016</sub> | 24 | 9.8  | 0.6      | 5 220       | 5 410       | 4 020      | 1 860         | 17 000    | 23.5 |           |           |
| 14          | RNAS10M  | RNAS10MR           | 14 <sup>+0.027</sup> / <sub>+0.016</sub> | 30 | 11.8 | 1        | 8 920       | 8 890       | 5 590      | 2 450         | 15 000    | 42.5 |           |           |
| 16          | RNAS12M  | RNAS12MR           | 16 <sup>+0.027</sup> / <sub>+0.016</sub> | 32 | 11.8 | 1        | 9 560       | 10 020      | 5 980      | 2 740         | 13 000    | 49.5 |           |           |
| 20          | RNAS15M  | RNAS15MR           | 20 <sup>+0.033</sup> / <sub>+0.020</sub> | 35 | 11.8 | 1        | 11 310      | 13 150      | 6 570      | 3 140         | 10 000    | 50   |           |           |
| 22          | RNAS17M  | RNAS17MR           | 22 <sup>+0.033</sup> / <sub>+0.020</sub> | 40 | 15.8 | 1        | 16 000      | 19 220      | 10 900     | 3 720         | 9 500     | 90   |           |           |
| 25          | RNAS20M  | RNAS20MR           | 25 <sup>+0.033</sup> / <sub>+0.020</sub> | 47 | 15.8 | 1        | 17 660      | 22 540      | 12 700     | 4 610         | 8 500     | 135  |           |           |
| 30          | RNAS25M  | RNAS25MR           | 30 <sup>+0.033</sup> / <sub>+0.020</sub> | 52 | 15.8 | 1        | 19 040      | 26 120      | 14 100     | 5 290         | 7 000     | 152  |           |           |
| 38          | RNAS30M  | RNAS30MR           | 38 <sup>+0.041</sup> / <sub>+0.025</sub> | 62 | 19.8 | 1        | 27 870      | 41 760      | 22 100     | 6 660         | 5 500     | 255  |           |           |
| 42          | RNAS35M  | RNAS35MR           | 42 <sup>+0.041</sup> / <sub>+0.025</sub> | 72 | 19.8 | 1        | 29 620      | 46 550      | 25 700     | 8 130         | 5 000     | 375  |           |           |
| 50          | RNAS40M  | RNAS40MR           | 50 <sup>+0.041</sup> / <sub>+0.025</sub> | 80 | 19.8 | 1.5      | 32 840      | 56 210      | 26 900     | 9 310         | 4 000     | 420  |           |           |
| 55          | RNAS45M  | RNAS45MR           | 55 <sup>+0.049</sup> / <sub>+0.030</sub> | 85 | 19.8 | 1.5      | 34 130      | 61 080      | 28 500     | 10 100        | 4 000     | 460  |           |           |
| 60          | RNAS50M  | RNAS50MR           | 60 <sup>+0.049</sup> / <sub>+0.030</sub> | 90 | 19.8 | 1.5      | 35 600      | 66 050      | 30 200     | 11 000        | 3 500     | 500  |           |           |

\* 适合润滑脂润滑。如果是油润滑，最大容许值可到达该数值的 130%。

外圈公差

| 类型                              | 圆筒外圈  | 球面外圈  |
|---------------------------------|-------|-------|
| RNAS5M                          | 0/-8  | 0/-50 |
| RNAS6M,RNAS8M,RNAS10M           | 0/-9  | 0/-50 |
| RNAS12M,RNAS15M,RNAS17M,RNAS20M | 0/-11 | 0/-50 |
| RNAS25M,RNAS30M,RNAS35M,RNAS40M | 0/-13 | 0/-50 |
| RNAS45M,RNAS50M                 | 0/-15 | 0/-50 |