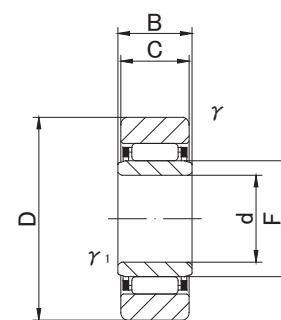
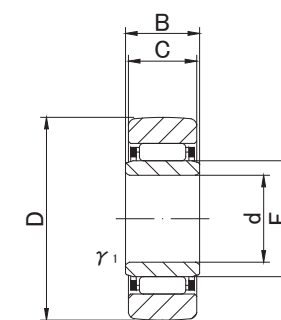




NAST..M



NAST..M



NAST..MR

NAST..M TYPE

Prepacked Grease

Shaft Diameter (mm)	Designation		Dimensions (mm)								Basic dynamic load rating	Basic static load rating	Track load capacity		Limiting speed *	Mass	
	Cylindrical outer ring	Crowned outer ring (R500)	d	D	B	C	r/s min	r1s min	F	Cr N			Cor N	Cylindrical outer ring N			Crowned outer ring N
6	NAST 6M	NAST 6MR	6 <sup>0</sup> <sub>-0.008</sub>	19	10	9.8	0.3		0.3	10	3 790	4 180	3 530	1 370	20 000	17.8	
8	NAST 8M	NAST 8MR	8 <sup>0</sup> <sub>-0.008</sub>	24	10	9.8	0.6		0.3	12	5 220	5 410	4 020	1 860	17 000	28	
10	NAST10M	NAST10MR	10 <sup>0</sup> <sub>-0.008</sub>	30	12	11.8	1		0.3	14	8 920	8 890	5 590	2 450	15 000	50	
12	NAST12M	NAST12MR	12 <sup>0</sup> <sub>-0.008</sub>	32	12	11.8	1		0.3	16	9 560	10 020	5 980	2 740	13 000	58	
15	NAST15M	NAST15MR	15 <sup>0</sup> <sub>-0.008</sub>	35	12	11.8	1		0.3	20	11 310	13 150	6 570	3 140	10 000	62	
17	NAST17M	NAST17MR	17 <sup>0</sup> <sub>-0.010</sub>	40	16	15.8	1		0.3	22	16 000	19 220	10 900	3 720	9 500	110	
20	NAST20M	NAST20MR	20 <sup>0</sup> <sub>-0.010</sub>	47	16	15.8	1		0.3	25	17 660	22 540	12 700	4 610	8 500	155	
25	NAST25M	NAST25MR	25 <sup>0</sup> <sub>-0.010</sub>	52	16	15.8	1		0.3	30	19 040	26 120	14 100	5 290	7 000	180	
30	NAST30M	NAST30MR	30 <sup>0</sup> <sub>-0.010</sub>	62	20	19.8	1		0.6	38	27 870	41 760	22 100	6 660	5 500	320	
35	NAST35M	NAST35MR	35 <sup>0</sup> <sub>-0.012</sub>	72	20	19.8	1		0.6	42	29 620	46 550	25 700	8 130	5 000	440	
40	NAST40M	NAST40MR	40 <sup>0</sup> <sub>-0.012</sub>	80	20	19.8	1.5		1	50	32 840	56 210	26 900	9 310	4 000	530	
45	NAST45M	NAST45MR	45 <sup>0</sup> <sub>-0.012</sub>	85	20	19.8	1.5		1	55	34 130	61 080	28 500	10 100	4 000	580	
50	NAST50M	NAST50MR	50 <sup>0</sup> <sub>-0.012</sub>	90	20	19.8	1.5		1	60	35 600	66 050	30 200	11 000	3 500	635	

\* Suitable for grease lubrication. In case of oil lubrication, up to 130% of this value shall be permissible.

OUTER RINGS TOLERANCE (Outside diameter) (µm)

TYPE	Cylindrical outer ring	Crowned outer ring
NAST6M,NAST8M,NAST10M	0/-9	0/-50
NAST12M,NAST15M,NAST17M,NAST20M	0/-11	0/-50
NAST25M,NAST30M,NAST35M,NAST40M	0/-13	0/-50
NAST45M,NAST50M	0/-15	0/-50