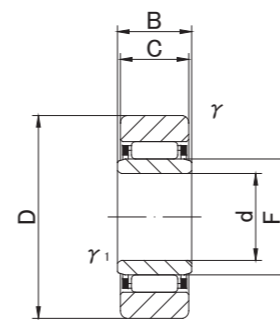


ROLLER FOLLOWERS

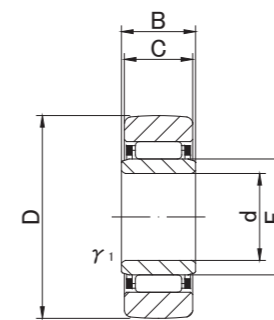
SEPARABLE WITH INNER RING



NAST



NAST



NAST..R

NAST TYPE

Prepacked Grease

Shaft Diameter (mm)	Designation		Dimensions (mm)							Basic dynamic load rating	Basic static load rating	Track load capacity		Limiting speed *	Mass		
	Cylindrical outer ring	Crowned outer ring (R500)	d	D	B	C	r/s min	r1s min	F			Cr N	Cor N			Cylindrical outer ring N	Crowned outer ring N
6	NAST 6	NAST 6R	6 ⁰ _{-0.008}	19	10	9.8	0.3		0.3	10	4 120	4 550	3 530	1 370	20 000	17.8	
8	NAST 8	NAST 8R	8 ⁰ _{-0.008}	24	10	9.8	0.6		0.3	12	5 680	5 890	4 020	1 860	17 000	28	
10	NAST10	NAST10R	10 ⁰ _{-0.008}	30	12	11.8	1		0.3	14	9 700	9 670	5 590	2 450	15 000	50	
12	NAST12	NAST12R	12 ⁰ _{-0.008}	32	12	11.8	1		0.3	16	10 400	10 900	5 980	2 740	13 000	58	
15	NAST15	NAST15R	15 ⁰ _{-0.008}	35	12	11.8	1		0.3	20	12 300	14 300	6 570	3 140	10 000	62	
17	NAST17	NAST17R	17 ⁰ _{-0.010}	40	16	15.8	1		0.3	22	17 400	20 900	10 900	3 720	9 500	110	
20	NAST20	NAST20R	20 ⁰ _{-0.010}	47	16	15.8	1		0.3	25	19 200	24 500	12 700	4 610	8 500	155	
25	NAST25	NAST25R	25 ⁰ _{-0.010}	52	16	15.8	1		0.3	30	20 700	28 400	14 100	5 290	7 000	180	
30	NAST30	NAST30R	30 ⁰ _{-0.010}	62	20	19.8	1		0.6	38	30 300	45 400	22 100	6 660	5 500	320	
35	NAST35	NAST35R	35 ⁰ _{-0.012}	72	20	19.8	1		0.6	42	32 200	50 600	25 700	8 130	5 000	440	
40	NAST40	NAST40R	40 ⁰ _{-0.012}	80	20	19.8	1.5		1	50	35 700	61 100	26 900	9 310	4 000	530	
45	NAST45	NAST45R	45 ⁰ _{-0.012}	85	20	19.8	1.5		1	55	37 100	66 400	28 500	10 100	4 000	580	
50	NAST50	NAST50R	50 ⁰ _{-0.012}	90	20	19.8	1.5		1	60	38 700	71 800	30 200	11 000	3 500	635	

* Suitable for grease lubrication. In case of oil lubrication, up to 130% of this value shall be permissible.

OUTER RINGS TOLERANCE (Outside diameter) (μm)

TYPE	Cylindrical outer ring	Crowned outer ring
NAST6,NAST8,NAST10	0/-9	0/-50
NAST12,NAST15,NAST17,NAST20	0/-11	0/-50
NAST25,NAST30,NAST35,NAST40	0/-13	0/-50
NAST45,NAST50	0/-15	0/-50