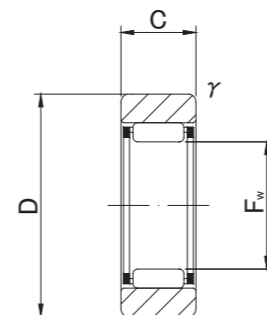


# ROLLER FOLLOWERS

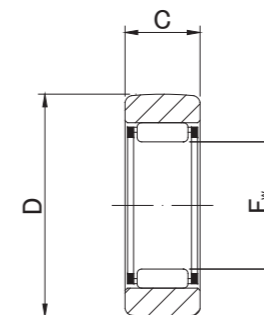
## SEPARABLE WITHOUT INNER RING



RNAS T



RNAS T



RNAS T.R

### RNAS T TYPE

Prepacked Grease

Shaft Diameter (mm)	Designation		Dimensions (mm)				Basic dynamic load rating	Basic static load rating	Track load capacity		Limiting speed *	Mass		
	Cylindrical outer ring	Crowned outer ring (R500)	Fw	D	C	r/s min			Cr N	Cor N			Cylindrical outer ring N	Crowned outer ring N
7	RNAS T 5	RNAS T 5R	7 <sup>+0.022</sup> / <sub>+0.013</sub>	16	7.8	0.3	2 740	2 390	2 350	1 080	30 000	8.9		
10	RNAS T 6	RNAS T 6R	10 <sup>+0.027</sup> / <sub>+0.016</sub>	19	9.8	0.3	4 120	4 550	3 530	1 370	20 000	13.9		
12	RNAS T 8	RNAS T 8R	12 <sup>+0.027</sup> / <sub>+0.016</sub>	24	9.8	0.6	5 680	5 890	4 020	1 860	17 000	23.5		
14	RNAS T10	RNAS T10R	14 <sup>+0.027</sup> / <sub>+0.016</sub>	30	11.8	1	9 700	9 670	5 590	2 450	15 000	42.5		
16	RNAS T12	RNAS T12R	16 <sup>+0.027</sup> / <sub>+0.016</sub>	32	11.8	1	10 400	10 900	5 980	2 740	13 000	49.5		
20	RNAS T15	RNAS T15R	20 <sup>+0.033</sup> / <sub>+0.020</sub>	35	11.8	1	12 300	14 300	6 570	3 140	10 000	50		
22	RNAS T17	RNAS T17R	22 <sup>+0.033</sup> / <sub>+0.020</sub>	40	15.8	1	17 400	20 900	10 900	3 720	9 500	90		
25	RNAS T20	RNAS T20R	25 <sup>+0.033</sup> / <sub>+0.020</sub>	47	15.8	1	19 200	24 500	12 700	4 610	8 500	135		
30	RNAS T25	RNAS T25R	30 <sup>+0.033</sup> / <sub>+0.020</sub>	52	15.8	1	20 700	28 400	14 100	5 290	7 000	152		
38	RNAS T30	RNAS T30R	38 <sup>+0.041</sup> / <sub>+0.025</sub>	62	19.8	1	30 300	45 400	22 100	6 660	5 500	255		
42	RNAS T35	RNAS T35R	42 <sup>+0.041</sup> / <sub>+0.025</sub>	72	19.8	1	32 200	50 600	25 700	8 130	5 000	375		
50	RNAS T40	RNAS T40R	50 <sup>+0.041</sup> / <sub>+0.025</sub>	80	19.8	1.5	35 700	61 100	26 900	9 310	4 000	420		
55	RNAS T45	RNAS T45R	55 <sup>+0.049</sup> / <sub>+0.030</sub>	85	19.8	1.5	37 100	66 400	28 500	10 100	4 000	460		
60	RNAS T50	RNAS T50R	60 <sup>+0.049</sup> / <sub>+0.030</sub>	90	19.8	1.5	38 700	71 800	30 200	11 000	3 500	500		

\* Suitable for grease lubrication. In case of oil lubrication, up to 130% of this value shall be permissible.

#### OUTER RINGS TOLERANCE (μm)

TYPE	Cylindrical outer ring	Crowned outer ring
RNAS T5	0/-8	0/-50
RNAS T6,RNAS T8,RNAS T10	0/-9	0/-50
RNAS T12,RNAS T15,RNAS T17,RNAS T20	0/-11	0/-50
RNAS T25,RNAS T30,RNAS T35,RNAS T40	0/-13	0/-50
RNAS T45,RNAS T50	0/-15	0/-50